

Quick Installation Guide

IEEE 802.11 b/g Wireless USB ADAPTER
AW-GU210

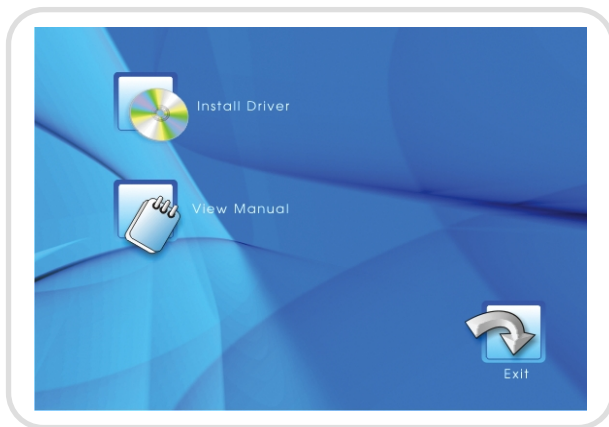


Hardware Installation:

1. Install the AW-GU210 driver first; the detail install processes refer to below Software Installation.
2. Find the USB 1.1 /2.0 ports on your motherboard or Laptop; plug AW-GU210 into USB port you selected.

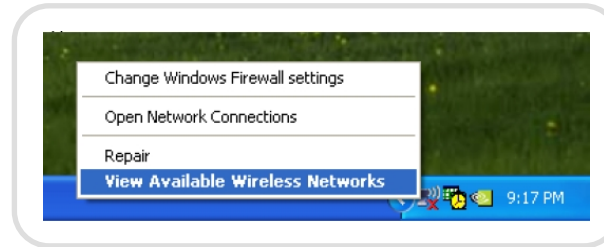
Software Installation:

Installing the AW-GU210 driver: The "Driver & Utility CD" would automatically display the Drivers menu if your PC is enabled with the "AUTORUN" function. Locate and click on the wireless driver and follow the on-screen instructions to install the drivers for AW-GU210.

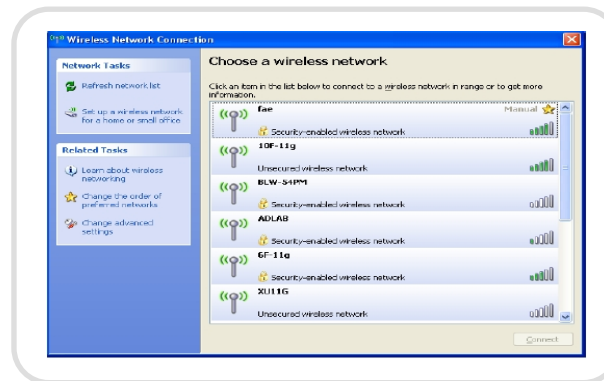


Network Connection:

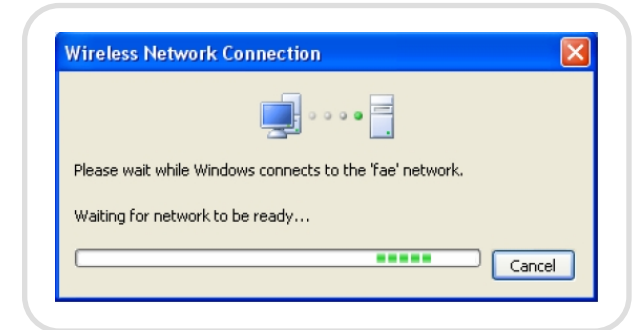
1. Please right click the network icon located on the desktop shortcut a dialogue pops up.



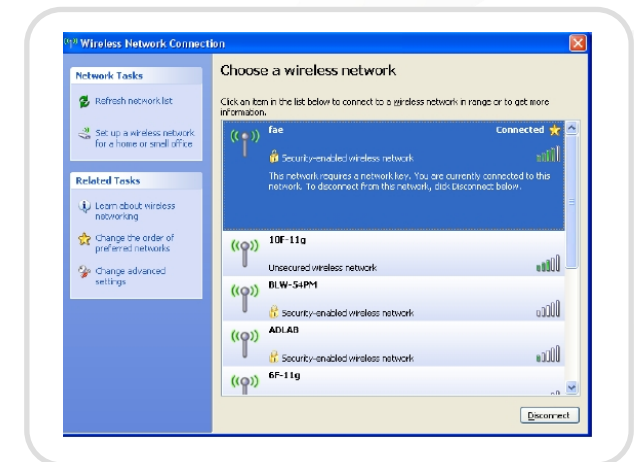
2. Choose a wireless network that is within range, and click on. Click the "View Available Wireless Networks" button.



3. Please wait till the Windows connects to the wireless network you choose.



4. The wireless network you choose is now connected.



* Please refer to user manual for other advanced functions, for example, WPA security setting.