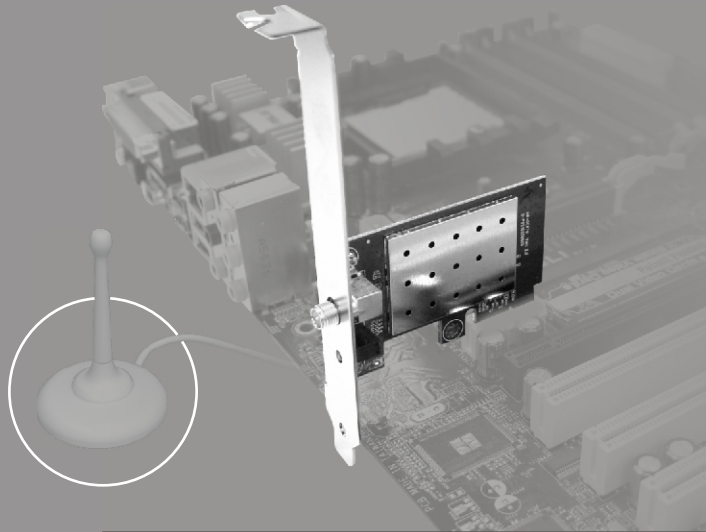


IEEE 802.11 b/g PCI-Express 1X Wireless Card  
Model: AW-GE870

## Quick Installation Guide



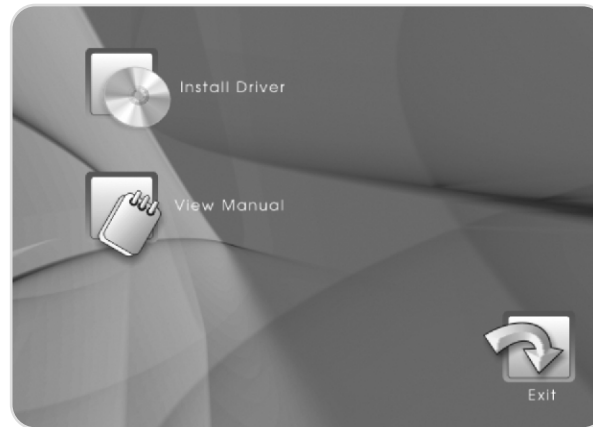
## Hardware Installation:

1. Find the PCI-E X1 slot on your motherboard if there is one. (Because each manufacturer might have their own unique designs it is most recommended to install the AW-GE870 card on the PCI-E X1 slot to avoid degrading of speed on the PCI-E X16 card.)

2. Stick the antenna onto a clear high-up spot. Be informed that providing a wide and clear space will help to boost the operating range.

## Software Installation:

Installing the AW-GE870 driver: The "Driver & Utility CD" would automatically display the Drivers menu if your PC is enabled with the "AUTORUN" function. Locate and click on the wireless driver and follow the on-screen instructions to install the drivers for AW-GE870.

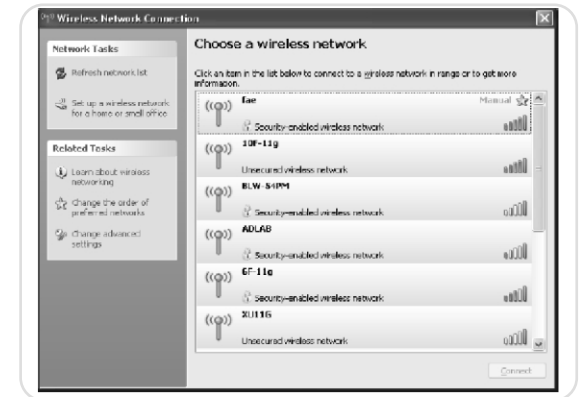


## Network Connection:

1. Double left-click the network icon located on the desktop shortcut a dialogue pops up. Click the "View Available Wireless Networks" button.



2. Choose a wireless network that is within range, and click on the [Connect] button to start connecting.



3. Please wait till the Windows connects to the wireless network you choose.



4. The wireless network you choose is now connected.

